

ORDINANCE NO. 0-29-03

AN ORDINANCE ANNEXING CERTAIN TERRITORY CONSISTING OF A PARCEL OF APPROXIMATELY 15.3 ACRES LOCATED ON THE NORTH SIDE OF CLARKSON LANE, WEST OF U. S. HIGHWAY 42, ADJACENT TO THE CITY LIMITS. (GRAND COMMUNITIES, LTD/MARTIN PROPERTY)

WHEREAS, Grand Properties, LTD, David W. Martin, Debra L. Martin and Thelma Martin, being the owners of record of the hereinafter described territory (the "territory"), have requested that the City of Florence, Kentucky (the "City") annex the territory and, pursuant to K.R.S. 81A.412, the owners have given written consent to such annexation; and

WHEREAS, the City has determined that it is desirable to annex the territory which is contiguous to the boundaries of the City, and

WHEREAS, pursuant to K.R.S. 100.209(1) the City makes the election that prior to final action of annexation, the comprehensive plan and official zoning map of the City shall be amended to incorporate and establish zoning of Suburban Residential One (SR-1) with respect to the territory.

NOW, THEREFORE, BE IT ORDAINED BY THE CITY OF FLORENCE, KENTUCKY, AS FOLLOWS:

**SECTION I**

The City finds that the hereinafter described unincorporated territory meets the requirements of K.R.S. 81A.410 and is as follows:

- (a) Is contiguous to the boundaries of the City, and
- (b) Is urban in character and suitable for development for urban purposes without unreasonable delay, and
- (c) Is not included within the boundary of another incorporated city.

**SECTION II**

That the territory, described in Exhibit "A" and shown on Exhibit "B" each of which is attached hereto and incorporated herein by reference, shall be and the same is hereby annexed to the City of Florence, Kentucky.

**SECTION III**

The owners of record of the territory have filed with the City written consent to this annexation under K.R.S. 81A.412 and therefore, the following do not apply to this annexation: (a) the notification ordinance required by K.R.S. 81A. 420(1); (b) the notice requirement of K.R.S. 81A.425; and (c) the waiting period of K.R.S. 81A.420(2).

**SECTION IV**

Pursuant to K.R.S. 100.209(1) the comprehensive plan and official zoning map of the City shall be amended to establish zoning for the territory as Suburban Residential One (SR-1).

**SECTION V**

This ordinance shall be published in full.

PASSED AND APPROVED ON FIRST READING THIS 28<sup>th</sup> DAY OF October, 2003.

PASSED AND APPROVED ON SECOND READING AND PUBLICATION ORDERED THIS 16<sup>th</sup> DAY OF MARCH, 2004.

APPROVED:

*Diane E. Whalen*  
MAYOR

ATTEST:

*Joyl A. City*  
CITY CLERK



# VIOX & VIOX, INC.

Engineers • Surveyors • Landscape Architects

OCTOBER 20, 2003

## DESCRIPTION OF 15.3 +/- ACRES TO BE ANNEXED BY THE CITY OF FLORENCE

Located in Boone County, Kentucky, lying on the north side of Clarkson Lane, approximately 0.27 mile west of U.S. Highway 42 and is more particularly described as follows:

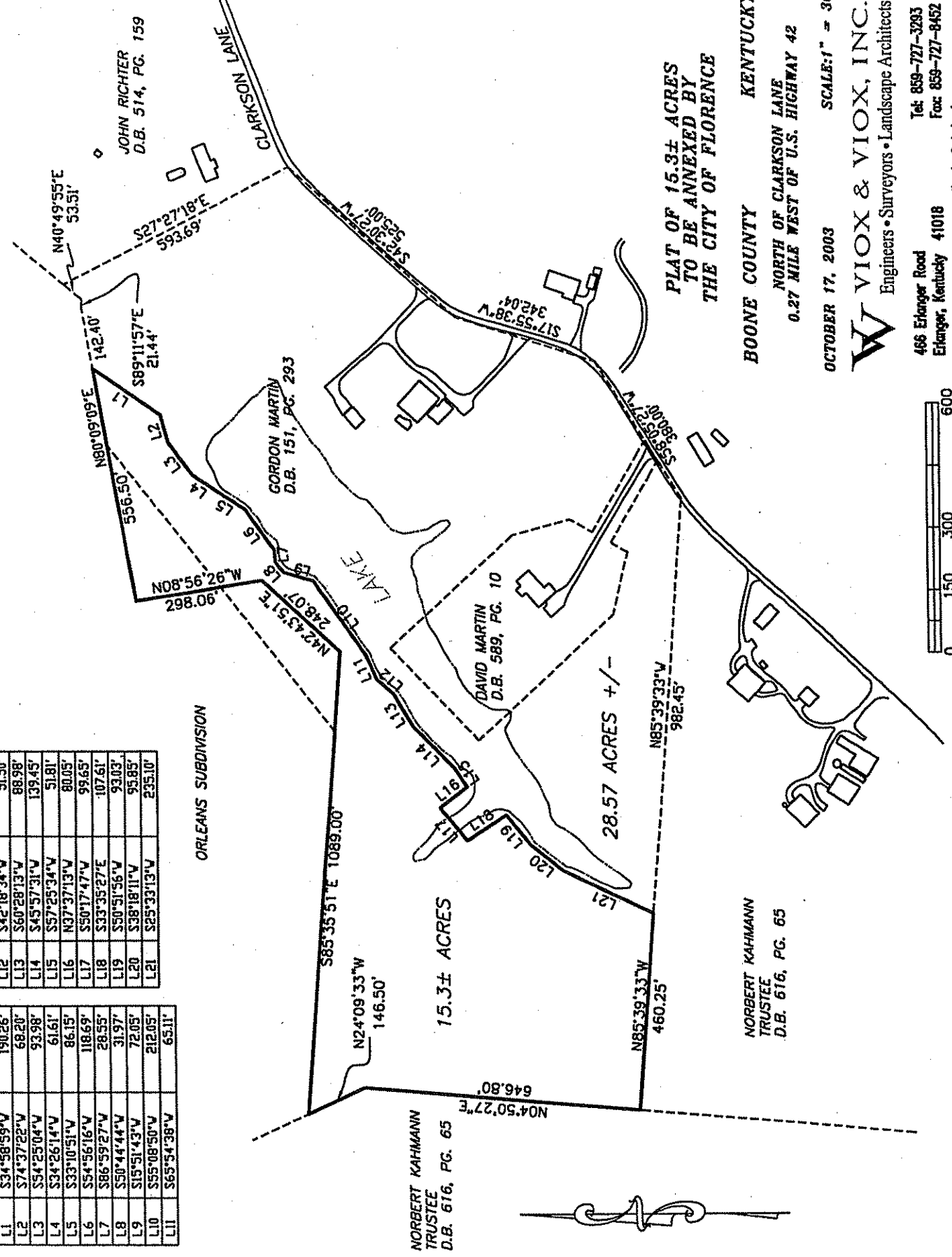
Beginning at a point at the common corner of Orleans Subdivision and Norbert Kahmann Trustee (Deed Book 616, page 85); thence S 85-35-51- E a distance of 1089.00' to a point; thence N 42-43-51- E a distance of 248.07' to a point; thence N 08-56-26- W a distance of 298.06' to a point; thence N 80-09-09- E a distance of 556.50' to a point; thence S 34-58-59- W a distance of 190.26' to a point; thence S 74-37-22- W a distance of 68.20' to a point; thence S 54-25-04- W a distance of 93.98' to a point; thence S 34-26-14- W a distance of 61.61' to a point; thence S 33-10-51- W a distance of 86.15' to a point; thence S 54-56-16- W a distance of 118.69' to a point; thence S 86-59-27- W a distance of 28.55' to a point; thence S 50-44-44- W a distance of 31.97' to a point; thence S 15-51-43- W a distance of 72.05' to a point; thence S 55-08-50- W a distance of 212.05' to a point; thence S 65-54-38- W a distance of 65.11' to a point; thence S 42-18-34- W a distance of 51.50' to a point; thence S 60-28-13- W a distance of 88.98' to a point; thence S 45-57-31- W a distance of 139.45' to a point; thence S 57-25-34- W a distance of 51.81' to a point; thence N 37-37-13- W a distance of 80.05' to a point; thence S 50-17-47- W a distance of 99.65' to a point; thence S 33-35-27- E a distance of 107.61' to a point; thence S 50-51-56- W a distance of 93.03' to a point; thence S 38-18-11- W a distance of 95.85' to a point; thence S 25-33-13- W a distance of 235.10' to a point; thence N 85-39-33- W a distance of 460.25' to a point; thence N 04-50-27- E a distance of 646.80' to a point; thence N 24-09-33- W a distance of 146.50' to the point of beginning containing 15.3 +/- acres.

EXHIBIT "A"

LINE	BEARING	DISTANCE
L12	S42°18'34"W	51.50'
L13	S60°28'13"W	88.98'
L14	S45°57'31"W	139.45'
L15	S57°25'34"W	51.81'
L16	N37°37'13"W	80.05'
L17	S50°17'47"W	99.65'
L18	S33°35'27"E	107.61'
L19	S50°51'56"W	93.03'
L20	S38°18'11"W	95.85'
L21	S25°33'13"W	235.10'

LINE	BEARING	DISTANCE
L1	S34°58'59"W	190.26'
L2	S74°37'22"W	68.20'
L3	S54°25'04"W	93.98'
L4	S34°26'14"W	61.61'
L5	S33°10'51"W	86.15'
L6	S54°56'16"W	118.69'
L7	S86°59'27"W	28.55'
L8	S50°44'44"W	31.97'
L9	S15°51'43"W	72.05'
L10	S55°08'50"W	212.05'
L11	S65°54'38"W	65.11'

ORLEANS SUBDIVISION



JOHN RICHTER  
D.B. 514, PG. 159

GORDON MARTIN  
D.B. 151, PG. 293

DAVID MARTIN  
D.B. 589, PG. 10

NORBERT KAHMANN  
TRUSTEE  
D.B. 616, PG. 65

PLAT OF 15.3± ACRES  
TO BE ANNEXED BY  
THE CITY OF FLORENCE

BOONE COUNTY KENTUCKY  
NORTH OF CLARKSON LANE  
0.27 MILE WEST OF U.S. HIGHWAY 42

OCTOBER 17, 2003 SCALE: 1" = 300'

**V** VIOX & VIOX, INC.  
Engineers • Surveyors • Landscape Architects

466 Erlanger Road  
Erlanger, Kentucky 41018  
Tel: 859-727-3293  
Fax: 859-727-8452  
e-mail: viox@viox.net



Exhibit "B"