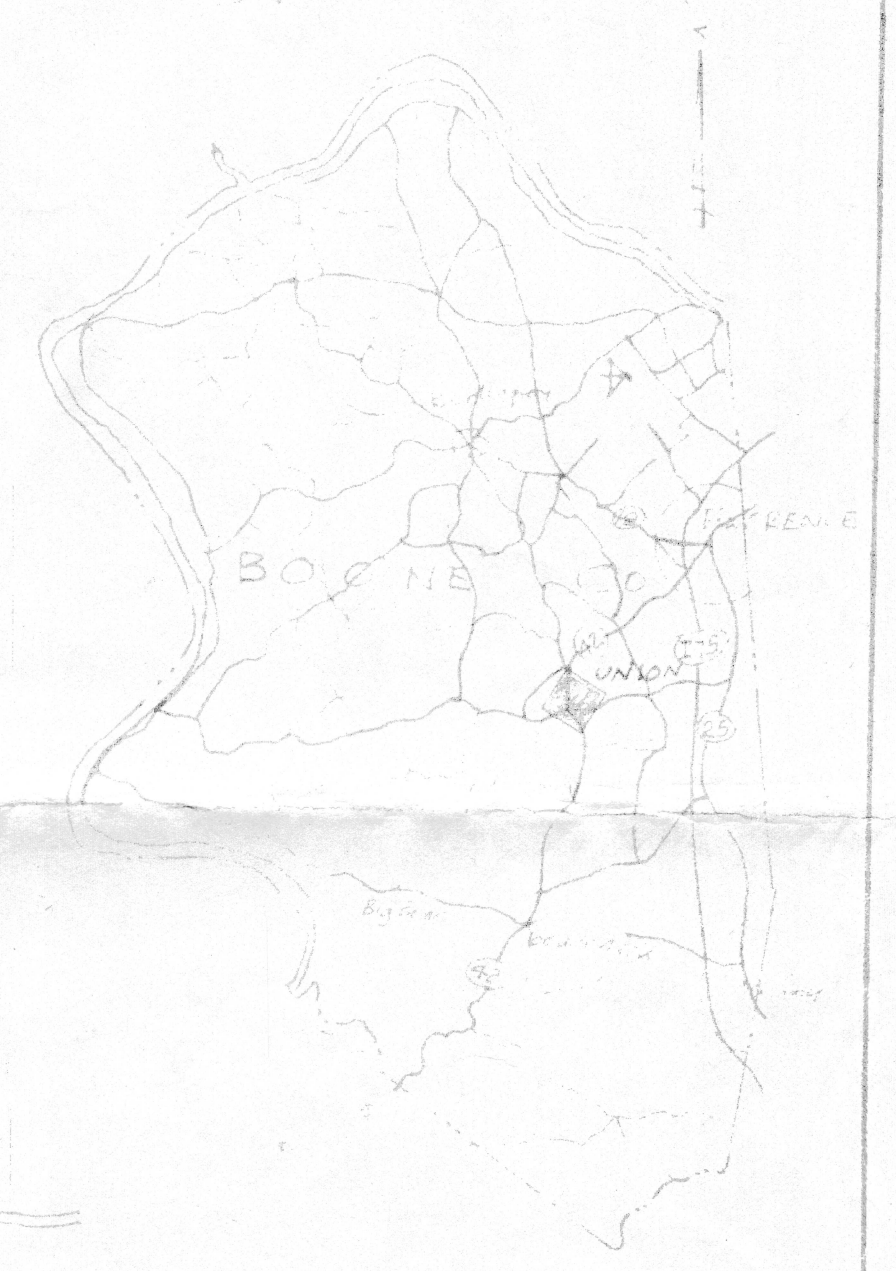
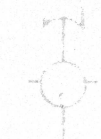


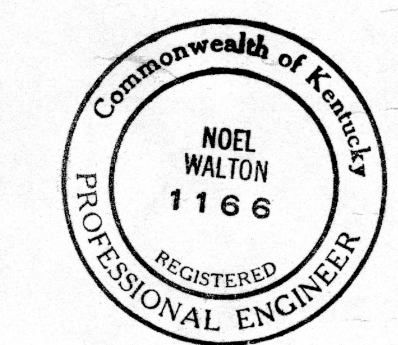
S 21° 15' W 52.97'

18° 55'

5280'



Vicinity map
Scale 1" = 4 miles



Plat of Incorporation Boundary for the City of
Union, Boone County, Kentucky
scale 1" = 500'
date: 2-23-62
Revised 3-7-73

From SE Corner of Jones
3 crv. Sta. Bldg. 1970) to
Point A: S35°E 30'

Clint Jones
Sta. Bldg.

Wm. J. Mersch
1.5 Ac.

Wilcox
Houston
16 Ac.

Fred J.
Helmer
18 Acres

Rev. E. Smith

Carl
Saltman
11.4 Ac.

Adele M. Laibly
18 Acres

Charles Norman Laibly
23.5 Ac.

Chas P. Collette
15.3 Ac.

A. Gambill
16-2 Ac.

Elizabeth Bowling 1.14 Acres

L. Liebbers 193 Acres

H. P. Daugherty
102 Ac.

Center Coordinate
81° 40' 42" W
38° 57' 5" N
OF

L. David Bark
Charlotte
1 ACIE

John G. Bowling et al
1.3 Acres

Ertha R. Shepherd 2.45 Ac.

Myrtle Beagle 4 Ac.

Lawrence Beck
Frances
3.8 Acres

A. Gambill
3 Acres

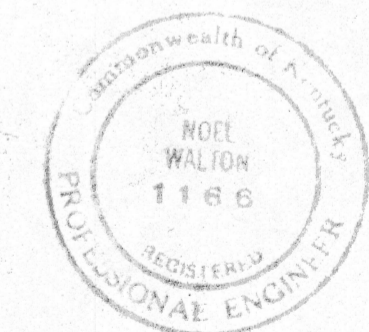
Moreland Blaine 43.5 Ac.
in city

ANDERLAND SUB

S58°5'E

Union Mt. Zion Road

BEG. DESC.



Bruce Ferguson et al
2 Acres (part of 13.91
home tract)

Harold Weaver et al
2.5 Ac in city

Steve Gregory
8.4 Ac.

T. Hamlin

Union Knoll Subdivision

Beryl Forness
6.4 Ac.

Elizabeth Popper et al
4 ACRES

Howard A. Lawrence
0.5 Ac.

Russell House
Willa
4.5 Ac.

Theodore McCormick
50-5 strip, 0.85 Ac.
(Part of 15 Ac)

Richard Holiday et al
1.75 Acres

UTZ Tract
Lay Union Knoll
48.33
Acres

UTZ TRACT
ANNEXED
72±

Robert Reeves et al
1 Acre in city
(360 Front)

E. Logsdon 6.4 Acres

Terry Tanner et al
10.4 Ac in city 5.85 Ac

Bruce Ferguson et al
4 Acres

Ad. B. Saff 4.1
Acres in city



Plat of Annexation - Boundary for the city of Union, Boone County, Kentucky.			
SCALE	1" = 500'	APPROVED BY	N. F. D.
DATE	3-7-73	DRAWN BY	
		REVISED	
		DRAWING NUMBER	

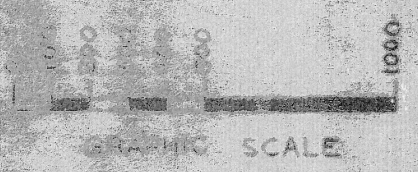
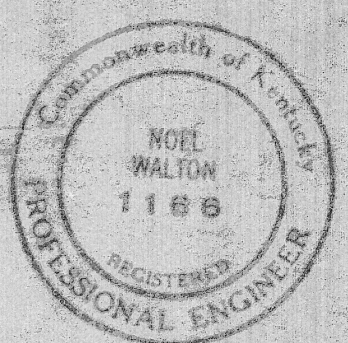
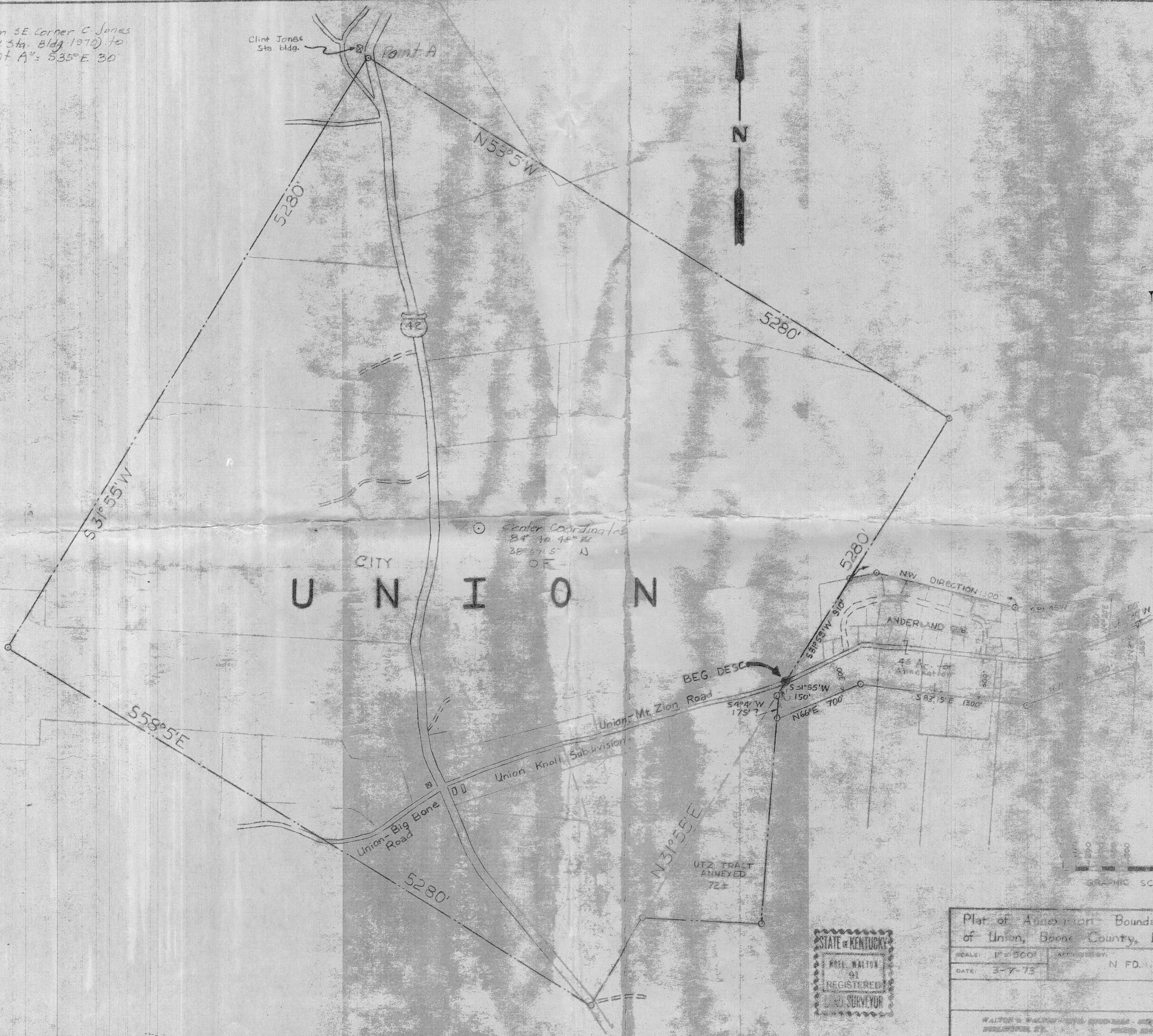
From SE Corner C. Jones
serv. Sta. Bldg. 1970) to
Point A": $S35^{\circ}E 30'$

Clint Jones
Sta. Bldg.



CITY
U N I O N

Center Coordinates
 $34^{\circ} 10' 48" N$
 $38^{\circ} 57' 5" W$
OF



Plat of Annexment Boundary for the city of Union, Boone County, Kentucky.		
SCALE: 1" = 500'	APPROVED BY: N.F.D.	DRAWN BY:
DATE: 3-7-73		REVISED:
WALTER S. WALTON - 1188 - BOONE COUNTY - KENTUCKY REGISTERED PROFESSIONAL ENGINEER		DRAWING NUMBER:

